

Spring Summer 2025



CHAPEAUX FLÉCHET,
CHAPEAUX PARFAITS
depuis 1859

Fléchet
/ SINCE 1859

RESPECT FOR TRADITION

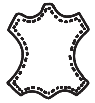
All our hats are handmade with the greatest attention to detail in the best workshops in France and Europe. Each stage of the manufacturing process is carried out manually, following the brand's century-old tradition. We respect several mandatory steps.

For the felt : sorting of the raw wool, cleaning of the wool, manufacturing of the wool cones, shaping of the hats, the finishing touches, the linings and the inner band.

For straw : weaving and shaping.

For caps : sewing the fabric, shaping, ironing and finishing.

SELECTION OF MATERIALS



leather



silk



linen



cotton



wool



bamboo



hemp



UV index

Our hats are carefully made from the materials most suited to your comfort. Whether they are made of straw, cotton or linen for summer, Merino wool, Donegal, Harris Tweed, Cashmere, rabbit hair or leather for winter, our hats provide you with optimum protection against the weather and the sun's rays.

ENVIRONMENTALLY FRIENDLY

At Fléchet all our hats are made in Europe, we are committed to reducing our carbon footprint and supporting local economies. Our head office is based in Loudun and offers centralised distribution allowing easy access to the whole country. We are committed to maintaining stock so that our partners can order and restock throughout the year. This reduces the need to travel to our factories. In order to minimize our impact on the environment and to protect and respect nature, our team selects natural fibres such as virgin wool, hemp and cotton, as well as natural fibres such as hemp and cotton and ecological dyes.

Fléchet

— *Values*



CHAPEAUX FLÉCHET,
CHAPEAUX PARFAITS

depuis 1859

CONTENTS



FLFE146 (colour : beige)
FLHE304 (colour : orange)

P.043
P.015

T. +33 (0)5 49 98 84 18
M. service@flechet-group.com
W. www.flechet.eu
f @Flechet
© @Flechet

Design : UC Création
Photo credits : Olivier Merzoug photographer - Fléchet

We would like to thank the photographer Olivier Merzoug
for making the photo shoot of our spring summer 2025 catalog.
oliviermerzoug.com

4 Men's collection

- 4 — Caps
- 6 ECOLOGICAL
- 10 URBAN
- 14 MODERN CHIC
- 18 UNI CHIC
- 21 LEATHER
- 22 — Linen hats
- 24 — Straw
- 26 PANAMA
- 28 SISAL
- 29 PAPER STRAW
- 30 WOVEN STRAW
- 31 HEMP BRAID
- 32 RAFFIA BRAID

34 Crochet raffia

40 Women's collection

- 40 — Straw
- 42 SISAL
- 43 WOVEN STRAW
- 46 PAPER STRAW
- 48 — Ceremony
- 52 — Urban chic

57 Accessories

58 Sales team

59 Glossary

FLFE189 model P.051
Ceremony
Colour : camel

FLHE304 P.015
Modern chic caps
Colour : blue ↓



CHAPEAUX FLÉCHET,
CHAPEAUX PARFAITS

depuis 1859





06/09
ECOLOGICAL

010/013
URBAN

014/017
MODERN CHIC

018/020
UNI CHIC

021
LEATHER

CAPS

Men's collection

— Between heritage
and **innovation**

The cap transcends time and trends, establishing itself as a timeless accessory. Free of codes, it keeps evolving, gracefully blending the nostalgic charm of yesteryear with the innovative spirit of today. Our spring summer 2025 collection reinvents this classic with a contemporary sensibility: refined materials, clean lines and a bold colour palette. Each piece embodies the essence of retro chic, combining authenticity with modern elegance. Discover a range where craftsmanship meets avant-garde design, offering today's gentleman an accessory that enhances his style with subtlety and character.

← FLHE302 model P.020
Uni chic cap's
Colour : green

← FLHE308 model P.013
Urban's cap
Colour : beige

Ecological

— Natural
and sustainable



 Linen 30%

FLHE320 



60% cotton 30% linen
10% recycled polyester

Colours : blue, beige, camel

Sizes : 55 → 62

FLHE320 (colour : camel)

FLHE321 



60% cotton 30% linen
10% recycled polyester

Colours : blue, beige, camel

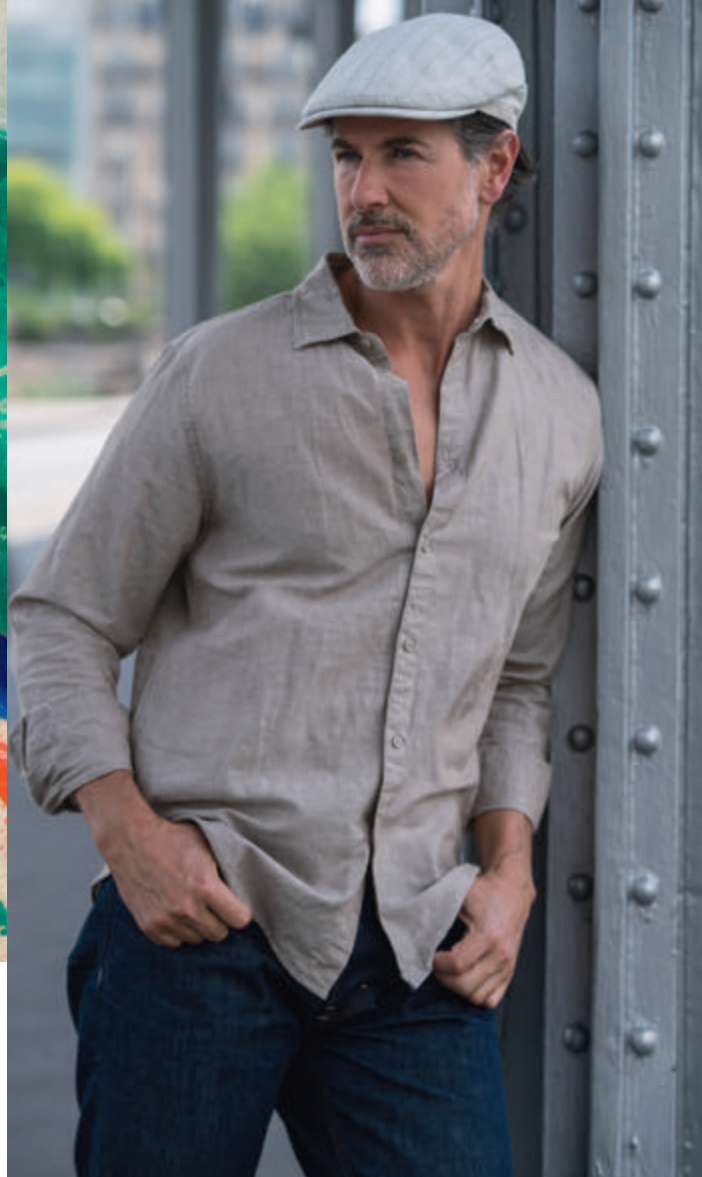
Sizes : 55 → 62



Linen 30%



FLHE321 (colour : blue)



FLHE316 (colour : natural) P.09

Each piece is crafted from an ingenious blend of carefully selected environmentally friendly materials. Organic cotton offers natural softness and breathability. Linen brings legendary freshness and durability. Bamboo, a miracle fiber, ensures optimal thermal regulation. Recycled polyester gives a second life to plastic waste, combining performance and ecology.



 Hemp 100%

FLHE266 



100% hemp
Colours : olive, navy, anthracite
Sizes : 55 → 62

 SPF 50



 Hemp 100%

FLHE40 



100% hemp
Colours : olive, navy, anthracite
Sizes : 55 → 62

 SPF 50



 Hemp 100%

FLHE167 



100% hemp
Colours : olive, navy, anthracite
Sizes : S → XL


 SPF 50

Ecological



FLHE323 (colour : grey)






FLHE323 
 60% bamboo, 40% recycled polyester
Colours : grey, natural, khaki
Sizes : 55 → 62

 Linen 14%



 Linen 14%



FLHE318 
 66% cotton 20% recycled polyester 14% linen
Colours : blue, green
Sizes : 55 → 62

FLHE319 
 66% cotton 20% recycled polyester 14% linen
Colours : green, blue
Sizes : 55 → 62



FLHE324 
 60% bamboo, 40% recycled polyester
Colours : grey, natural, khaki
Sizes : S → XL



FLHE317 (colour : natural)



SPF
40

FLHE171 



100% linen
Colours : beige, ecru
Sizes : 55 → 62



Linen 27%

FLHE317 



60% cotton 27% linen 13% recycled polyester
Colours : beige, natural
Sizes : S → XL



Linen 27%

FLHE316 



60% cotton 27% linen 13% recycled polyester
Colours : beige, natural
Sizes : 55 → 62



FLHE318 (colour : green) P.08

Urban

— Vintage statement



FLHE237 (colour : blue) P.012



FLHE332 (colour : beige) P.011 - FLHE236 (colour : pink) P.012



FLHE252 

65% virgin wool 21% silk 14% linen

Colours : grey, blue

Sizes : 55 → 62



Silk 21%



Linen 14%



FLHE237 (colour : blue) P.012 - FLHE332 (colour : blue)

Each piece is an ode to French elegance, combining vintage spirit with a contemporary touch. Crafted with artisanal know-how, our caps are much more than mere accessories. They are the expression of a way of life, an urban poetry that expresses itself in each fabric and sewing.



Cotton 50%



Linen 50%



Opposite side
beige cap's

FLHE331

50% linen 50% cotton
Colours : blue, beige
Sizes : 55 → 62



Cotton 50%



Linen 50%



FLHE332

50% linen 50% cotton
Colours : blue, beige
Sizes : 55 → 62



Silk 21%



Linen 14%



FLHE253

65% virgin wool 21% silk 14% linen
Colours : grey, blue
Sizes : 55 → 62

Urban

Live an unparalleled poetic experience, where each cap becomes a link between the heritage of French fashion and the avant-garde spirit of our times.




FLHE236 (colour : pink)



Linen 100%



FLHE236 



100% linen
Colours : grey, blue, green
pink, beige
Sizes : 55 → 62



Linen 100%



FLHE237 



100% linen
Colours : grey, blue, green
pink, beige
Sizes : 55 → 62





Silk lining 100%



FLHE308



55% silk 45% virgin wool
Colours : beige, blue
Sizes : S → XL



Silk lining 100%



FLHE307



55% silk 45% virgin wool
Colours : beige, blue
Sizes : 55 → 62



FLHE307 (colour : blue)

Modern chic

— Elegant combination



FLHE305 (colour : blue)

 Linen 100%



 SPF
40

FLHE305 

 100% linen
Colours : khaki, blue, parma
Sizes : 55 → 62

 Linen 100%



 SPF
40

FLHE306 

 100% linen
Colours : khaki, blue, parma
Sizes : 55 → 62



The caps in the Modern chic collection redefine elegance through a bold exploration of shapes and colours. Each model is a visual symphony, skilfully orchestrating contrasts and harmonies. Linen, the ultimate noble fibre, is at the heart of the collection.



FLHE306 (colour : parma) P.014 - FLHE330 (colour : blue) P.016



 Linen 100%

 SPF 40

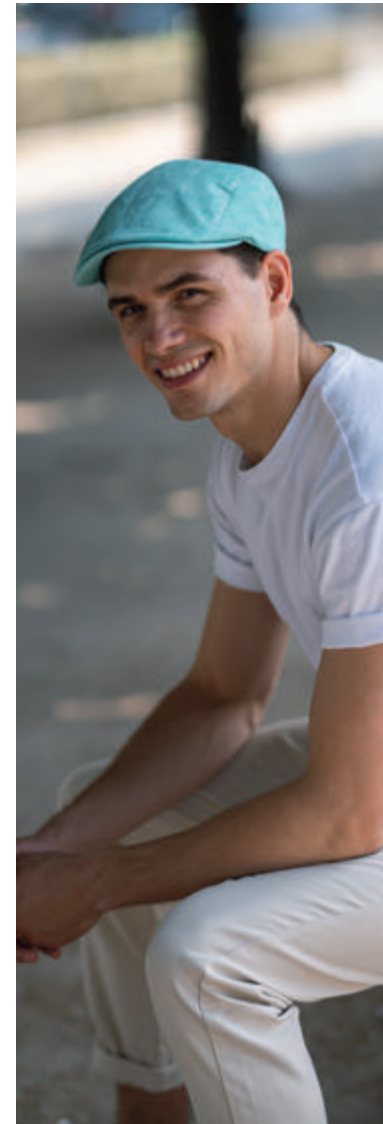
FLHE303 
 100% linen
 Colours : blue, orange, turquoise, beige
 Sizes : 55 → 62



 Linen 100%

 SPF 40

FLHE304 
 100% linen
 Colours : blue, orange, turquoise, beige
 Sizes : 55 → 62



FLHE304 (colour : turquoise)

Chosen for its exceptional qualities, it adds a touch of natural refinement to each cap. Renowned for its incomparable breathability, linen offers optimum comfort and adds a unique tactile dimension, while its matte appearance and impeccable fit lend a casual elegance to each model.

Modern chic



FLHE314 (colour : beige)



FLHE314 
100% linen
Colours : grey, blue, brick, beige
Sizes : 55 → 62

 SPF
40



FLHE315 
100% linen
Colours : grey, blue, brick, beige
Sizes : 55 → 62

 SPF
40



FLHE329 
100% linen
Colour : type
Sizes : 55 → 62

 SPF
40

FLHE330 
100% linen
Colours : blue, beige, camel
Sizes : 55 → 62

 SPF
40



FLHE329 (colour : type) P.016



 Linen 31%

FLHE309 

53% polyester 31% linen 16% virgin wool
Colours : beige, blue, purple
Sizes : 55 → 62



 Linen 31%

FLHE310 

53% polyester 31% linen 16% virgin wool
Colours : beige, blue, purple
Sizes : S → XL



 Linen 31%

FLHE311 

53% polyester 31% linen 16% virgin wool
Colours : beige, blue, purple
Sizes : 55 → 62



FLHE309 (colour : purple)

Uni chic

— A gentleman's affair



 Modal 28%

FLHE192 



44% cotton 28% modal 28% polyester
Colours : blue, beige
Sizes : 55 → 62



Modal 28%



FLHE262 (colour : orange) P.020



FLHE328 (colour : grey) P.019

FLHE230 



44% cotton 28% modal 28% polyester
Colours : blue, beige, grey
Sizes : 55 → 61




FLHE262 (colour : orange) P.020

These monochrome caps are designed to enhance your outfits with a touch of understated elegance. Their incomparable versatility adapts to every style, from casual to sophisticated. Made from noble materials such as silk, linen, cotton and modal, these caps are exceptionally soft to the touch. Each piece embodies the quintessence of luxurious comfort, making your accessory a pleasure to wear every day.



 **Silk 100%**


FLHE325 

 100% silk
Colours : camel, blue, brick, beige
 Sizes : 55 → 62

 **Silk 72%**



FLHE328 

 72% silk 28% wool
 80% polyester 20% polyamide
Colours : grey, blue, beige
 Sizes : 55 → 62


Uni chic



FLHE262 (colour : orange)



Linen 100%

FLHE262 



100% linen
Colours : orange, pink, green,
blue, beige
Sizes : 55 → 62

 SPF
40



Linen 100%



FLHE302 



100% linen
Colours : orange, pink, green,
blue, beige
Sizes : 55 → 62

 SPF
40


Leather

— Centuries-old
know-how



FLHE173 (colour : cognac)



FLHE173 



100% leather

Colours : cognac, navy, black, beige

Sizes : 55 → 62



FLHE265 



100% leather

Colours : cognac, navy, black, beige

Sizes : 55 → 62



FLHE265 (colour : navy)

Our leather caps combine suppleness and robustness. Emblems of the modern gentleman, they offer timeless style. Made from quality leathers, they ensure comfort and elegance for all occasions.

Linen hats




FLHE357 (colour : brick)

FLHE357 
 100% linen
 Colours : grey, blue, brick, beige
 Sizes : S → XL



SPF
40


FLHE356 
 100% linen
 Colours : grey, blue, brick, beige
 Sizes : S → XL




SPF
40



 Linen 31%

FLHE352 
 53% polyester 31% linen 16% virgin wool
 Colours : beige, blue, purple
 Sizes : S → XL

FLHE353 
 53% polyester 31% linen 16% virgin wool
 Colours : beige, blue, purple
 Sizes : S → XL

LINEN HATS

Men's collection

— Refined simplicity

Immerse yourself in the pure elegance of our monochrome linen hats. Combining sobriety and sophistication, each piece enhances your outfits with a touch of discreet refinement. Linen's versatility adapts to every style, from casual to formal. This noble fiber, renowned for its lightness and heat-regulating properties, guarantees optimum comfort even on the hottest days. Discover the art of elegant simplicity, where every hat becomes the perfect accessory to your summer style.

← FLHE357 model P.022
Colour : blue

→
FLHE340 model P.032
Raffia braid
Colour : blue ↓



CHAPEAUX FLÉCHET,
CHAPEAUX PARFAITS
depuis 1859





026/027
PANAMA

028
SISAL

029
PAPER
STRAW

030
WOVEN
STRAW

031/033
HEMP/RAFFIA
BRAID

STRAW

Men's collection

— Summer elegance

An essential summer icon, the straw hat embodies both casual chic and the spirit of urban escapism. Our collection boldly reinvents this classic, blending tradition and modernity. From colourful braids to innovative weaves, each model has its own unique personality. The meticulous selection of straws and the meticulous finishes are the evidence of our quest for sophistication. Combining sun protection with refined style, these timeless hats are the perfect finishing touch to your summer outfits. Embrace casual elegance and make every sunny day an opportunity to shine.

← FLFE201 model P.045
Woven blue
Colour : red

← FLHE342 model P.032
Raffia braid
Colour : khaki

Panama

☀️ SPF
50



BRISA Grade 4/5

FLHE18 _____



CUENCA MONTECRISTI

FLHE18MONTECRISTI _____

FLHE18 / 18MONTECRISTI  _____

Colours : white, natural

Braid : 9 colours to choose from beige, camel, brown, French blue, navy, black, plum, orange, lagoon blue,

Sizes : 55 → 61

☀️ SPF
50



BRISA Grade 4/5

FLHE88 _____



CUENCA MONTECRISTI

FLHE88MONTECRISTI _____

FLHE88 / 88MONTECRISTI  _____

Colours : white, natural

Braid : 9 colours to choose from beige, camel, brown, French blue, navy, black, plum, orange, lagoon blue,

Sizes : 55 → 61





SPF
50



BRISA Grade 4/5

FLHE47 _____



CUENCA MONTECRISTI

FLHE47MONTECRISTI _____

FLHE47 / 47MONTECRISTI  _____

Colours : white, natural

Braid : 9 colours to choose from beige, camel, brown,

French blue, navy, black, plum, orange, lagoon blue

Sizes : 55 → 61

— Weaves and braids *Julien Faure*

CRÉATEUR ** RUBANS
FABRICATION FRANÇAISE

All our Panama hats are traditionally made by hand. They are hand-woven in Ecuador from toquilla straw. Unless otherwise stated, they are available in two types of weave, the Brisa being the most common.

1 BRISA PANAMA

Brisa weaving is a cross weave forming small squares. Less complex in appearance, it is perceived as being finer and lighter than the Cuenca weave.

2 MONTECRISTI PANAMA

The Montecristi weave has the appearance of real little diamonds (squares). Impeccable quality and finish: the weave is extremely fine, tight and precise with the most regular stitch. Montecristi is known as the finest and lightest Panama hat. This headwear is a true symbol of elegance, the result of a meticulous and inimitable craftsmanship.

You will find these symbols on each reference when it is available in both types of weaving :

available not available

All panamas are available with 9 colours of braid, made in France by Julien Faure, creator of ribbons for haute couture since 1864.

WWW.JULIEN-FAURE.FR



Sisal

Sisal, a remarkably fine natural fibre, combines suppleness and lightness. Its clean, shiny look adds a touch of elegance to hats. Robust and durable, it holds perfectly, ideal for refined summer accessories.



FLHE345 (colour : type)



FLHE345 

100% sisal straw

Colour : type

Sizes : S → XL

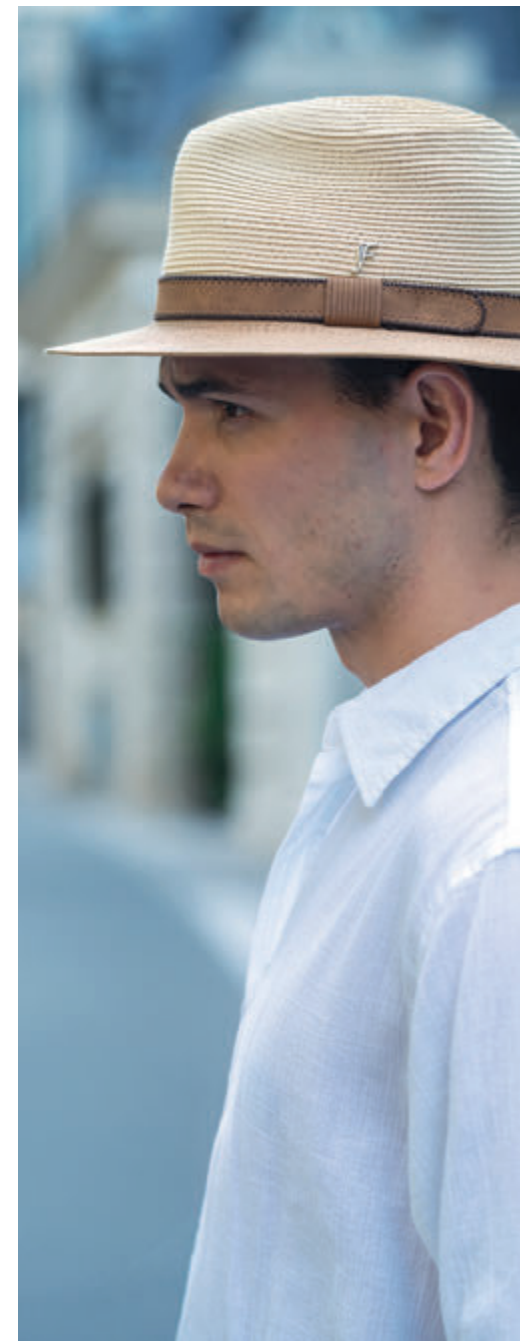


FLHE344 

100% sisal straw

Colour : type

Sizes : S → XL





FLHE350 (colour: beige) P.029




Paper straw



FLHE350 
100% paper straw
Colours : black, grey, navy, beige
Sizes : 55 → 62

FLHE348 
100% paper straw
Colours : black, grey, blue, beige
Sizes : 55 → 62

FLHE347 
100% paper straw
Colours : black, grey, blue, beige
Sizes : 55 → 62

Woven straw



FLHE58 (colour: type - navy/red braid)



FLHE58 

100% florentine straw

Colour : type - navy/red braid

Sizes : 55 → 61



FLHE59 

100% florentine straw

Colour : type

Sizes : 55 → 61



FLHE351 



100% hemp

Colours : black, brown, navy, natural


Sizes : 55 → 62





Hemp braid




FLHE272 

 100% hemp
Colours : black, brown, navy, natural
Sizes : M → XL

FLHE273 

 100% hemp
Colours : black, brown, navy, natural
Sizes : S → XL

FLHE274 

 100% hemp
Colours : black, brown, navy, natural
Sizes : S → XL

Raffia braid



FLHE339 

100% fine raffia
Colours : white, blue, brown
Sizes : S → XL



FLHE340 

100% fine raffia
Colours : white, blue, brown
Sizes : S → XL



FLHE342 

100% fine raffia
Colours : black, khaki, brown
Sizes : S → XL



FLHE340 (colour : blue)



FLHE342 (colour : khaki)



FLHE341 

100% fine raffia
Colour : type
Sizes : S → XL



FLHE343 (colour : blue)



FLHE283 

100% fine raffia
Colours : camel, navy
petroleum, black
Sizes : 55 → 61



FLHE282 

100% fine raffia
Colours : camel, navy
petroleum, black
Sizes : 55 → 61



FLHE343 

100% raffia
Colours : blue, brown
Sizes : S → XL

Our raffia braid hats combine lightness and suppleness for incomparable summer comfort. Their natural look, enhanced by coloured braids or leather straps, offers a unique style. Their exceptional breathability keeps you cool even on the hottest days.

FLHE338 model P.036 →
Colour : navy
FLHE271 model P.037
Colour : black ↓



CHAPEAUX FLÉCHET,
CHAPEAUX PARFAITS
depuis 1859

036/038
MEN

039
WOMEN

CROCHET RAFFIA

collection

— Tropical *elegance*

Discover the Raffia Crochet collection, the quintessence of refinement and lightness. Delicately crocheted from natural raffia, an exceptional exotic fibre, our hats for men and women combine timeless elegance with retro chic. The incomparably fine crocheting brings suppleness and breathability, ensuring comfort even on the hottest days. The unique texture of crocheted raffia adds a touch of natural glamour to each model, while its remarkable lightness makes it the ideal accessory for your summer escapades. Let yourself be seduced by the exotic charm of raffia for an experience full of style and authenticity!

← FLFE187 model P.039
Colour : beige

Crochet raffia




FLHE270 
100% extra fine raffia
Colours : camel, navy, black
Sizes : S → XL



FLHE160 
100% extra fine raffia
Colours : camel, navy, black
Sizes : S → XL



FLHE337 
100% extra fine raffia
Colours : camel, navy, black
Sizes : S → XL




FLHE338 (colour : navy)



FLHE346 (colour : type) P.037



FLHE338 
100% extra fine raffia
Colours : camel, navy, black
Sizes : S → XL



FLHE337 (colour : navy) P.036



FLHE346 

100% extra fine raffia
Colour : type
Sizes : S → XL



FLHE50 

100% extra fine raffia
Colour : type
Sizes : S → XL



FLHE67 

100% extra fine raffia
Colour : type
Sizes : S → XL



FLHE68 

100% extra fine raffia
Colour : type
Sizes : S → XL

The hat is reversible : the braid can be worn on both sides



FLHE271 

100% extra fine raffia REVERSIBLE
Colours : navy, black
Sizes : M → XL



FLHE346 (colour : type)


Our crocheted raffia hats seduce men and women with their warm versatility. Each model, enhanced with colourful straps, suits every style. Some pieces, delicately tinted, add a touch of originality to this naturally elegant and comfortable collection.

Crochet raffia




FLHE220 (colour: khaki)



FLHE220 

100% extra fine raffia
Colours : blue, mustard, khaki
black, natural
Sizes : 55 → 61

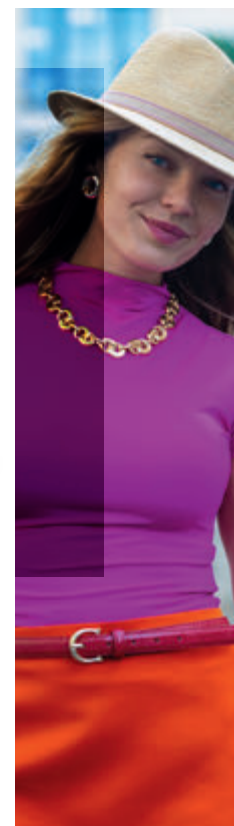


FLHE269 

100% extra fine raffia
Colours : blue, mustard, khaki
black, natural
Sizes : 55 → 62




FLFE105 (colour: mustard) P.039



FLFE187 

100% extra fine raffia
Colours : yellow, red, beige, blue
Sizes : S → XL

FLFE107 

100% extra fine raffia
Colours : yellow, red, beige, blue
Sizes : S → XL

FLFE105 

100% extra fine raffia
Colours : yellow, red, beige, blue
Sizes : S → XL

FLFE210 model P.042 →
Sisal straw
Colour : type
FLFE205 colour P.043
Woven straw
Colour : red ↓



CHAPEAUX FLÉCHET,
CHAPEAUX PARFAITS
depuis 1859



042
SISAL

043/045
WOVEN
STRAW

046/047
PAPER
STRAW

STRAW

Women's collection

— Glamour and femininity

Immerse yourself in a world of refinement with our collection of feminine straw hats. Each model, the result of exceptional craftsmanship in our workshops in France and Europe, embodies the perfect blend of style and functionality. Discover a dazzling array of shapes and colours, enhanced by braids in avant-garde patterns. These trendy accents add a touch of originality to every piece. In addition to their glamorous and resolutely feminine look, these hats offer optimum sun protection. They are the ideal accessory for facing sunny days with elegance and serenity.

← FLFE207 model P.046
Paper straw
Colour : pink

Sisal



FLFE209 (colour : type)



FLFE209 

100% sisal straw
Colour : type
Size : ADJUSTABLE ONE SIZE



FLFE210 

100% sisal straw
Colour : type
Size : ADJUSTABLE ONE SIZE



FLFE198 (colour : black) P.043



SPF 50

FLFE198 

100% fine florentine straw
Colours : red, black, beige
Size : ADJUSTABLE ONE SIZE



SPF 50

FLFE205 

100% fine florentine straw
Colours : red, black, beige
Size : ADJUSTABLE ONE SIZE



SPF 50

FLFE146 

100% fine florentine straw
Colours : red, black, beige
Size : ADJUSTABLE ONE SIZE

Woven straw




FLFE146 (colour : beige)

Woven straw




FLFE202 (colour: natural) P.045



FLFE203  _____
100% fine florentine straw
Colours : black, natural, red, chocolate
Size : ADJUSTABLE ONE SIZE


 SPF
50



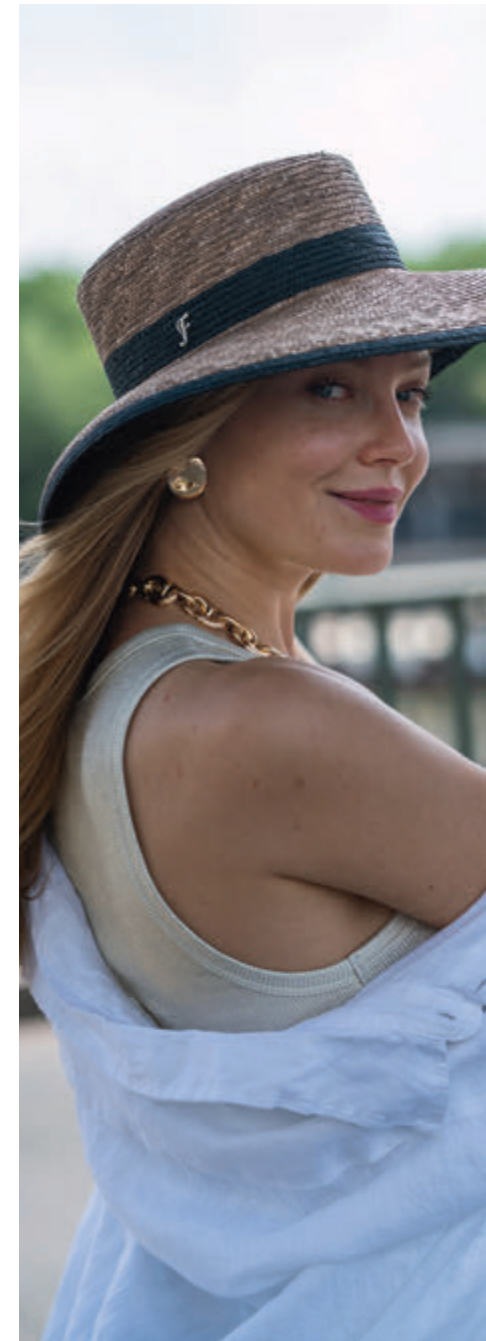
FLFE204  _____
100% fine florentine straw
Colours : black, natural, red, chocolate
Size : ADJUSTABLE ONE SIZE

 SPF
50



FLFE199  _____
100% fine florentine straw
Colours : black, natural, red, chocolate
Size : ADJUSTABLE ONE SIZE

 SPF
50



FLFE202 (colour: chocolate) P.045



SPF
50

FLFE202

100% fine florentine straw
Colours : **black, natural, red, chocolate**
Size : ADJUSTABLE ONE SIZE



SPF
50

FLFE200

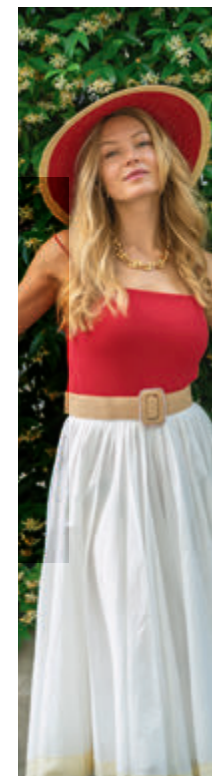
100% fine florentine straw
Colours : **black, natural, red, chocolate**
Size : ADJUSTABLE ONE SIZE



SPF
50

FLFE201

100% fine florentine straw
Colours : **black, natural, red, chocolate**
Size : ADJUSTABLE ONE SIZE



Paper straw




FLFE130 

100% paper straw

Colours : dark grey, grey, navy, honey, beige

Sizes : S → M

FLFE131 

100% paper straw

Colours : dark grey, grey, navy, honey, beige

Sizes : S → M

FLFE132 

100% paper straw


Colours : dark grey, grey, navy, honey, beige

Sizes : S → M



FLFE208 

100% paper straw
Colours : beige, khaki, pink, orange
Sizes : S → XL

FLFE206 

100% paper straw
Colours : beige, khaki, pink, orange
Sizes : M → L

FLFE207 

100% paper straw
Colours : beige, khaki, pink, orange
Sizes : S → XL


Ceremony

 Hemp 100%



FLFE193 


100% hemp
Colours : natural, camel, black
Sizes : S → L

 Hemp 100%



FLFE192 

100% hemp
Colours : natural, camel, black
Sizes : S → L

 Hemp 100%



FLFE191 

100% hemp
Colours : natural, camel, black
Sizes : S → XL





CEREMONY

Women's collection

— Harmony of audacious colours

The major events collection is illuminated by intense, vivid hues, awakening the imagination and unleashing your creativity for an exceptional look. Like wearable works of art, these creations enhance every silhouette with grace and originality. Made from hemp, a noble and natural plant fibre, our designs combine lightness and elegance. Their incomparable softness and airy suppleness promise absolute comfort, allowing you to glow with ease on the most prestigious occasions.

← FLFE190 model P.051
Colour : red

FLFE193 model P.048
Colour : black

Ceremony



FLF158 (colour: navy)



FLFE157 



100% hemp

Colours : black, khaki, red, navy, camel, natural

Size : ADJUSTABLE ONE SIZE



FLFE158 



100% hemp

Colours : black, khaki, red, navy, camel, natural

Size : ADJUSTABLE ONE SIZE



FLFE189 (colour: camel) P.051



FLFE188 

100% hemp
Colours : black, khaki, red, navy,
camel, natural
Size : ADJUSTABLE ONE SIZE



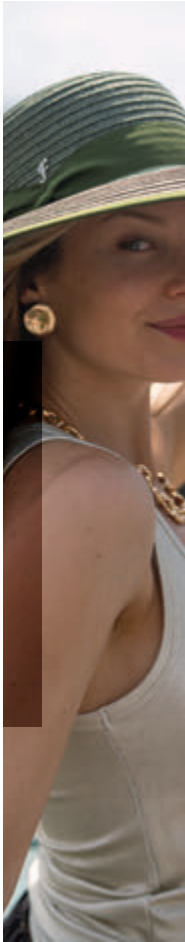
FLFE189 

100% hemp
Colours : black, khaki, red, navy,
camel, natural
Size : ADJUSTABLE ONE SIZE



FLFE190 

100% hemp
Colours : black, khaki, red, navy,
camel, natural
Size : ADJUSTABLE ONE SIZE



FLHE325 model P.019
Uni chic cap's
Colour : brick

FLFE182 model P.054
Colour : navy ↓



CHAPEAUX FLÉCHET,
CHAPEAUX PARFAITS
depuis 1859





URBAN CHIC

Women's collection

— Poetic distinction

Immerse yourself in the enchanting world of the Urban Chic spring summer 2025 collection, where poetic distinction meets urban sophistication. Soft hues and subtle prints intertwine gracefully, instilling a discreet elegance in every cap. This line embodies the very essence of finesse and poetic freshness. Each creation is a tribute to the softness of summer, using materials renowned for their silky touch and incomparable comfort. The Urban Chic collection invites you on a sensory journey where spring inspiration blends with urban elegance. Let the poetry of this collection sublimate your look, for a season placed under the sign of grace and lightness.

← FLFE186 model P.055
Colour : khaki

FLFE184 model P.055
Colour : mustard

Urban chic



FLFE179 (colour : red)




FLFE181 

 100% cotton
Colours : black, red
Size : ONE SIZE



FLFE180 

 100% cotton
Colours : black, red
Size : ONE SIZE

Back side




Back side

FLFE179 

 100% cotton
Colours : black, red
Size : ONE SIZE




FLFE183 

 100% linen
Colours : white, navy
Size : ONE SIZE



FLFE182 

 100% linen
Colours : white, navy
Size : ONE SIZE



FLFE184 (colour : mustard)



 Linen 100%

FLFE186 
100% linen 100% polyurethane
Colours : mustard, brick, khaki
Size : ONE SIZE



 Linen 100%

FLFE184 
100% linen 100% polyurethane
Colours : mustard, brick, khaki
Size : ONE SIZE



 Linen 100%

FLFE185 
100% linen 100% polyurethane
Colours : mustard, brick, khaki
Size : ONE SIZE



FLFE186 (colour : khaki)

01	
FLFE205	
P.043	
02	07
FLHE323	FLFE187
P.08	P.039
03	08
FLFE207	FLFE202
P.047	P.045
04	09
FLHE338	FLFE158
P.038	P.050
05	10
FLHE314	FLHE237
P.016	P.012
06	11
FLHE302	FLHE304
P.020	P.015
FLHE308	FLFE189
P.013	P.051
FLFE210	12
P.042	FLFE190
	P.051

Fléchet

Collection

— *Love Paris*

Share with us your look on social media



@Fléchet
#Spring summer 2025



Accessories



1



2



3



4



5

SOLD BY 10 _____

1. FACCESS1 : flat cap box
2. FACCESS2BIS : hat box - size: 45 cm
3. FACCESS2 : hat box - size: 35 cm
4. FACCESS3 : cone
5. FACCESS4 : shopping bag

Sales team

France Belgium

Flechet Group France head office

Avenue de la coopération 86200 Loudun

T. +33(0)5 49 98 84 18

M. service@flechet-group.com

W. www.flechet.eu

France North / Paris / Brittany

Alsace / Rhône Alpes

Yann Vanlair

T. +33(0)6 07 99 94 80

M. yann@flechet.eu

France South-west

Jean-Michel Beyssac

T. +33(0)6 76 02 51 55

M. jm.beyssac@mbyflechet.fr

France South-east / Corsica

Véronique Lauriol

T. +33(0)6 34 07 44 99

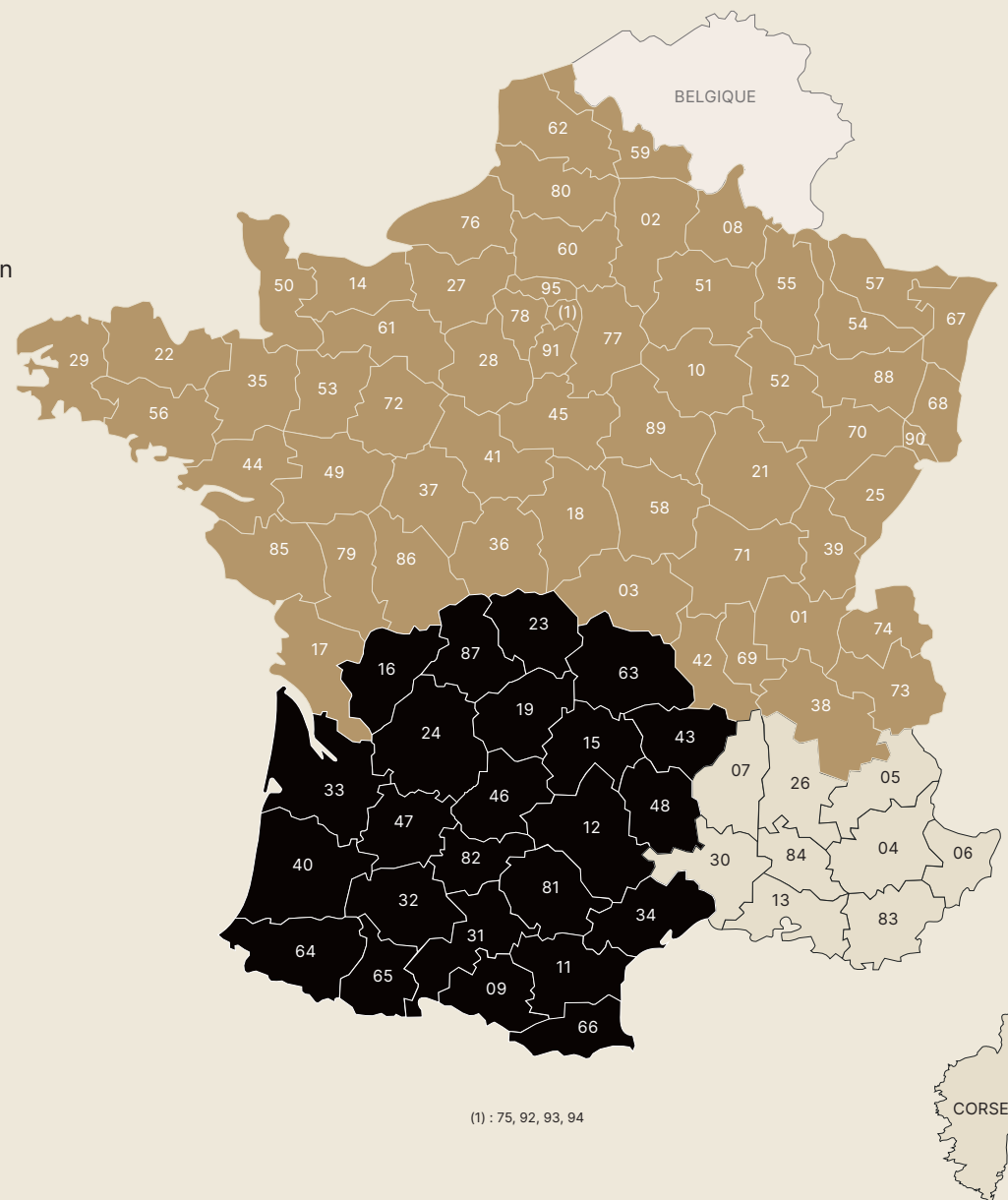
M. veronique@flechet.eu

Belgium

Alain Monie

T. +33(0)7 55 59 45 96

M. alain@flechet.eu



BtoB

www.flechet.eu

Find our products
on our BtoB website
www.flechet.eu



Glossary / index

FLHE			
FLHE18.....	26	FLHE271.....	37
FLHE18		FLHE272.....	31
MONTECRISTI.....	26	FLHE273.....	31
FLHE40.....	7	FLHE274.....	31
FLHE47.....	27	FLHE282.....	33
FLHE47		FLHE283.....	33
MONTECRISTI.....	27	FLHE302.....	20
FLHE50.....	37	FLHE303.....	15
FLHE58.....	30	FLHE304.....	15
FLHE59.....	30	FLHE305.....	14
FLHE67.....	37	FLHE306.....	14
FLHE68.....	37	FLHE307.....	13
FLHE88.....	26	FLHE308.....	13
FLHE88		FLHE309.....	17
MONTECRISTI.....	26	FLHE310.....	17
FLHE160.....	36	FLHE311.....	17
FLHE167.....	7	FLHE314.....	16
FLHE171.....	9	FLHE315.....	16
FLHE173.....	21	FLHE316.....	9
FLHE192.....	18	FLHE317.....	9
FLHE220.....	38	FLHE318.....	8
FLHE230.....	18	FLHE319.....	8
FLHE236.....	12	FLHE320.....	6
FLHE237.....	12	FLHE321.....	6
FLHE252.....	10	FLHE323.....	8
FLHE253.....	11	FLHE324.....	8
FLHE262.....	20	FLHE325.....	19
FLHE265.....	21	FLHE328.....	19
FLHE266.....	7	FLHE329.....	16
FLHE269.....	38	FLHE330.....	16
FLHE270.....	36	FLHE331.....	11
		FLHE332.....	11
		FLHE337.....	36
		FLHE338.....	36
		FLHE339.....	32
		FLHE340.....	32
		FLHE341.....	32
		FLHE342.....	32
		FLHE343.....	33
		FLHE344.....	28
		FLHE345.....	28
		FLHE346.....	37
		FLHE347.....	29
		FLHE348.....	29
		FLHE350.....	29
		FLHE351.....	30
		FLHE352.....	22
		FLHE353.....	22
		FLHE356.....	22
		FLHE357.....	22
		FLFE	
		FLFE105.....	39
		FLFE107.....	39
		FLFE130.....	46
		FLFE131.....	46
		FLFE132.....	46
		FLFE146.....	43
		FLFE157.....	50
		FLFE158.....	50
		FLFE179.....	54
		FLFE180.....	54
		FLFE181.....	54
		FLFE182.....	54
		FLFE183.....	54
		FLFE184.....	55
		FLFE185.....	55
		FLFE186.....	55
		FLFE187.....	39
		FLFE188.....	51
		FLFE189.....	51
		FLFE190.....	51
		FLFE191.....	48
		FLFE192.....	48
		FLFE193.....	48
		FLFE198.....	43
		FLFE199.....	44
		FLFE200.....	45
		FLFE201.....	45
		FLFE202.....	45
		FLFE203.....	44
		FLFE204.....	44
		FLFE205.....	43
		FLFE206.....	47
		FLFE207.....	47
		FLFE208.....	47
		FLFE209.....	42
		FLFE210.....	42
		FACCESS	
		FACCESS1.....	57
		FACCESS2.....	57
		FACCESS2BIS.....	57
		FACCESS3.....	57
		FACCESS4.....	57

Despite our vigilance, it is possible that misprints have crept into the texts or prices. The articles presented in this catalogue are only indicative. The colour rendering in the photos may differ from the actual colour of the product.

NOTES

Spring Summer 2025



CHAPEAUX FLÉCHET,
CHAPEAUX PARFAITS
depuis 1859

*F*l é c h e t
/ SINCE 1859